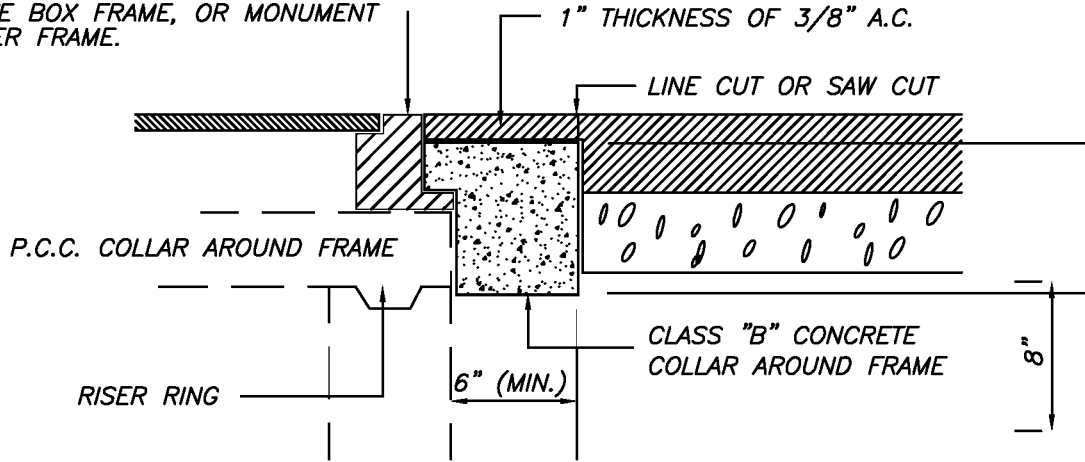


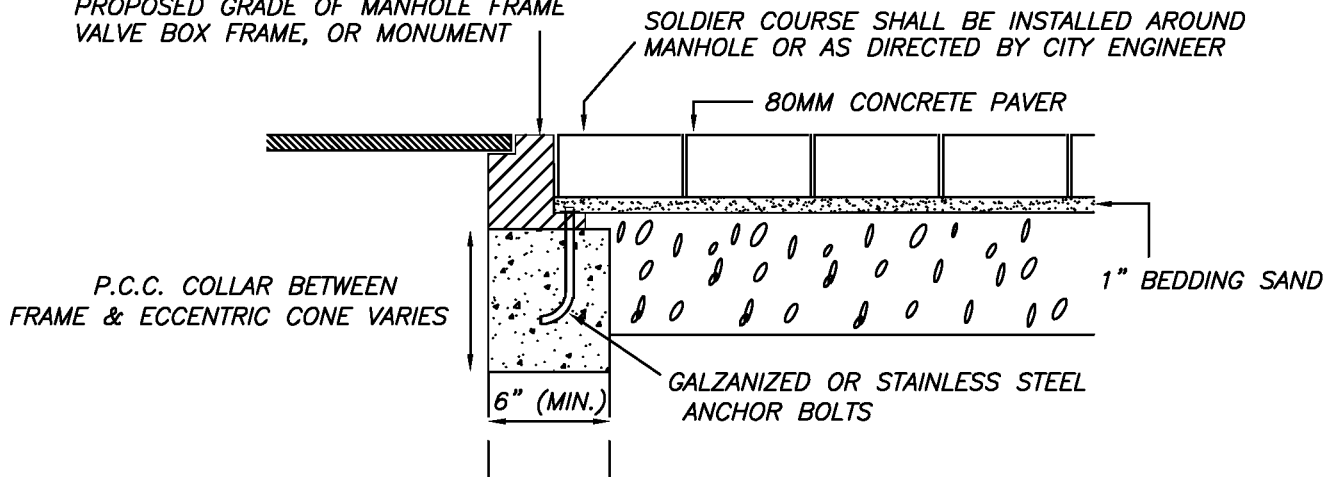
PROPOSED GRADE OF MANHOLE FRAME
VALVE BOX FRAME, OR MONUMENT
COVER FRAME.



NOTES:
ELEVATION OF FRAME SHALL MATCH FINISH
GRADE OF ADJACENT PAVEMENT + 1/8".

ADJUSTING EXISTING FRAMES

PROPOSED GRADE OF MANHOLE FRAME
VALVE BOX FRAME, OR MONUMENT



NOTES:
ELEVATION OF FRAME SHALL MATCH FINISH
GRADE OF ADJACENT PAVEMENT ± 1/8".
MINIMUM OF 3 ANCHOR BOLTS MUST BE USED.

ADJUSTING NEW FRAMES

NO.	REVISED	BY	Adjusting Street Facilities to Grade	APPROVED
				
				CITY ENGINEER RCE-28191
DRAWN BY: MCP				DATE: 2-2-99
CHECKED BY: DJR			CITY OF RIPON	STANDARD NO. M-6
SCALE: NONE				