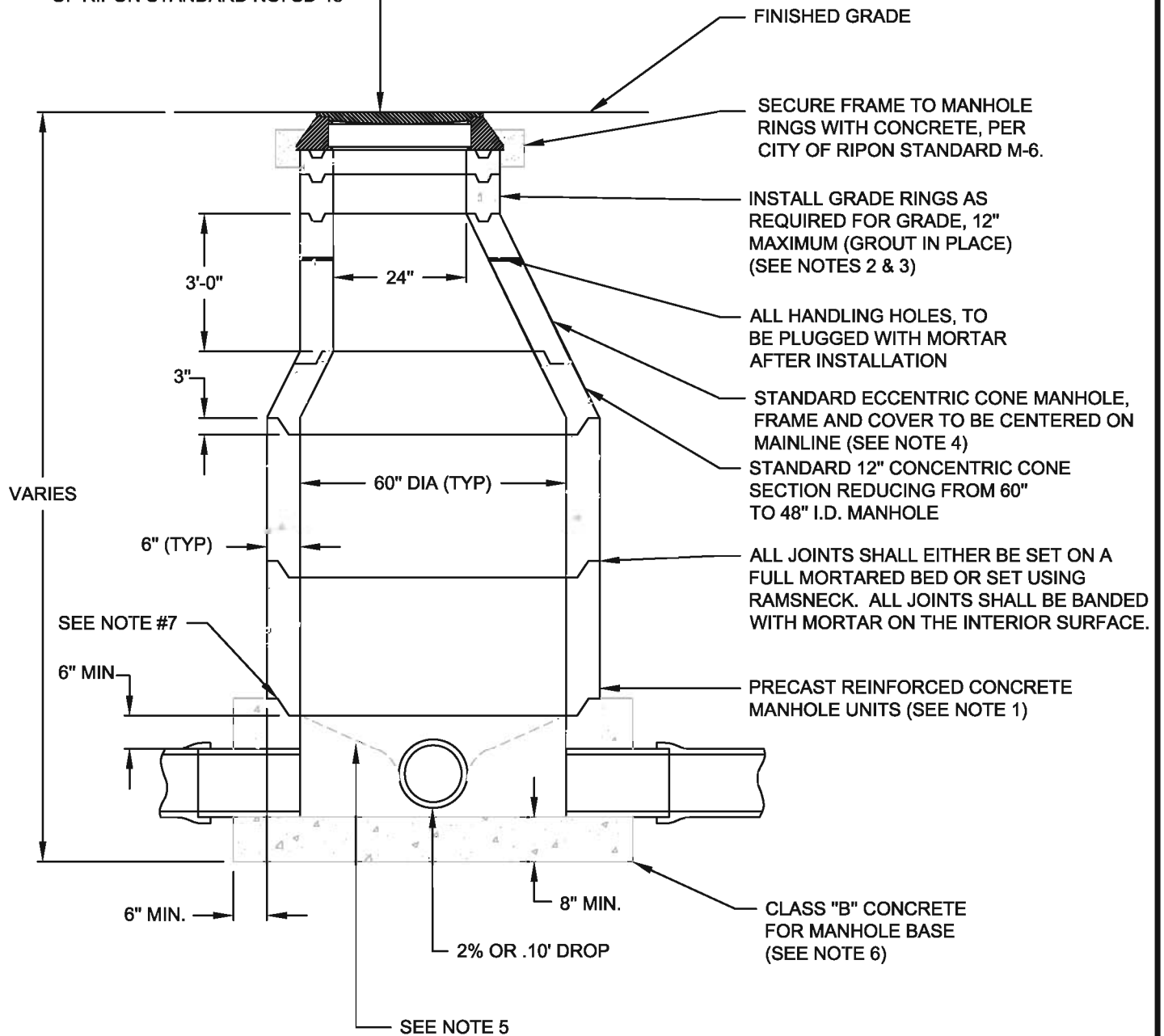



MANHOLE FRAME AND COVER
FOR DETAILS REFER TO CITY
OF RIPON STANDARD NO. SD-15



NOTES:

1. PRECAST REINFORCED CONCRETE MANHOLE UNITS SHALL CONFORM TO A.S.T.M. C-478.
2. NUMBER OF GRADE RINGS TO BE KEPT AT A MINIMUM FOR ORIGINAL CONSTRUCTION TO ALLOW FOR FUTURE PAVEMENT ADJUSTMENTS.
3. PRIOR APPROVAL MUST BE OBTAINED FROM EITHER THE CITY ENGINEER OR CITY FIELD INSPECTOR BEFORE INSTALLING MORE THAN 12" OF GRADE RINGS.
4. CONCENTRIC CONES MAY BE USED ONLY WITH PRIOR APPROVAL FROM EITHER THE CITY ENGINEER OR CITY FIELD INSPECTOR.
5. STORM PIPE MAY BE LAID THROUGH THE MANHOLE AND THE TOP PORTION REMOVED, VIA SAW CUTTING, AFTER THE CONCRETE BASE HAS SET.
6. MANHOLE BASE SHALL HAVE A LIGHT BROOM FINISH.
7. BOTTOM MANHOLE SECTION SHALL BE WET-SET OR SET IN FORMED GROOVE.

NO.	REVISED	BY	<p>Type 1 Standard Storm Manhole</p>	APPROVED	
				 CITY ENGINEER RCE-28191	
				DATE: 2-2-99	
DRAWN BY: TP			<p>CITY OF RIPON</p>	STANDARD NO. SD-10	
CHECKED BY: DJR				V:\25 City of Ripon Standards\Standard Specifications\Drawings\Storm\SD-10.dwg	