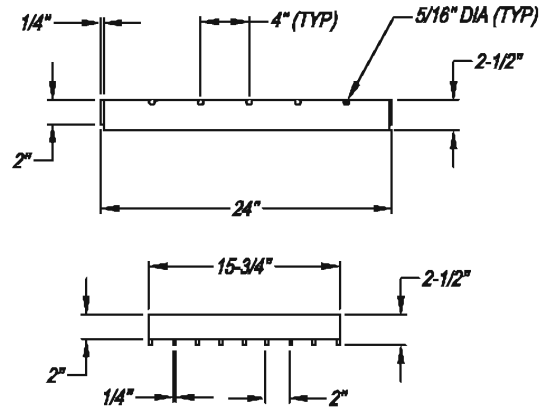


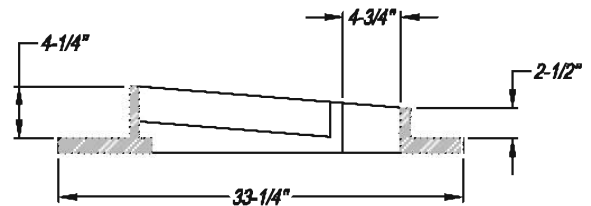
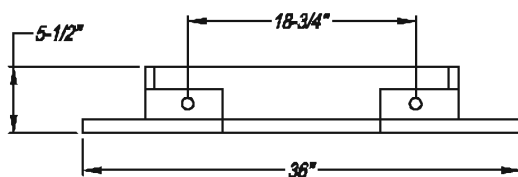
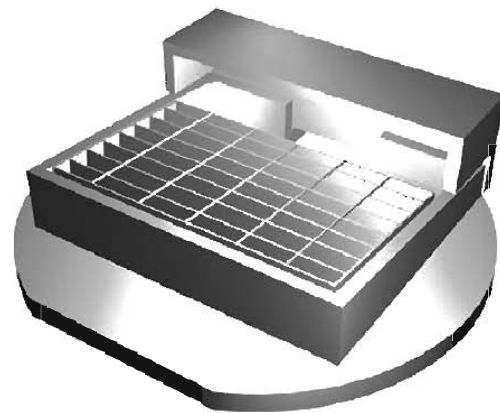
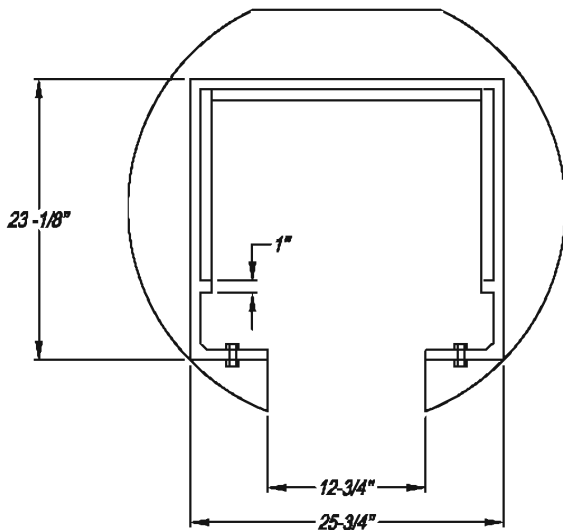
HOOD DETAIL

(SEE NOTE 5)



GRATE DETAIL

(SEE NOTE 7)



FRAME DETAIL

(SEE NOTE 6)


NOTES:

1. FRAME AND HOOD SHALL BE MANUFACTURED OF CAST IRON CONFORMING TO A.S.T.M. A-48 CLASS 35B.
2. FRAME, GRATE, AND HOOD SHALL BE H-20 RATED.
3. GRATE SHALL BE HOT-DIPPED GALVANIZED AND CHAINED TO FRAME.
4. FRAME AND HOOD SHALL BE COATED WITH BITUMINOUS MATERIAL CONFORMING TO A.W.W.A. C 203.
5. HOOD SHALL BE D&L FOUNDRY I-3560 OR APPROVED EQUAL.
6. FRAME SHALL BE D&L FOUNDRY I-3560 OR APPROVED EQUAL.
7. GRATE SHALL BE D&L FOUNDRY I-3560 HOT DIPPED GALVANIZED OR APPROVED EQUAL.

NO.	REVISED	BY
DRAWN BY: MCP		
CHECKED BY: DJR		
V:\125_City of Ripon Standards Standard Specifications Drawings Storm SD-8.dwg		

**Frame and Grate
Type 1 Curb Inlet
Catch Basin**

CITY OF RIPON

APPROVED

CITY ENGINEER 58093
DATE: 11-7-00
STANDARD NO. SD-8