



WATER METER MATERIAL & ORDER INFORMATION

Supplier Contact:

Badger Meter
PO Box 245036
940 Riverside Parkway, Ste 30
West Sacramento, CA 95605

Dan Gilliam
Phone 707/575-0700
Fax 707/575-3786
Toll Free 877/348-0700
badgermeter.com

Material (Residential):

1. *METER BOX*

Residential: Oldcastle Christy B16 Concrete Meter Box

2. *BADGER METER*

Residential: Recordall Disc Series Meters

Size: $\frac{3}{4}$ "(M35); **1" (M70)**; **1.5"(M120)**; or 2"(M170)

3. *ENCODER*

HR-E High Resolution 8-Dial Encoder, registered in cubic foot

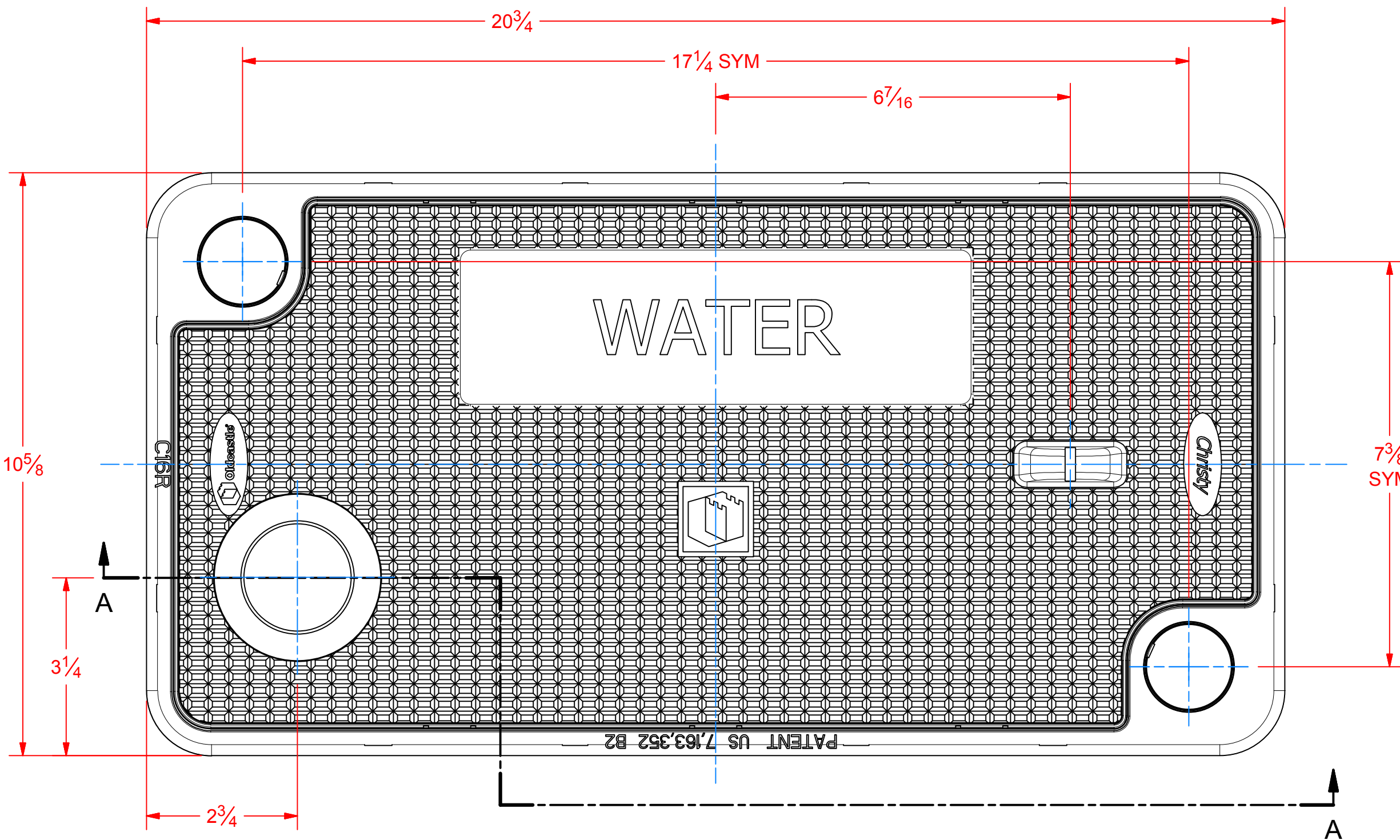
Note: Model of Encoder should match the meter size model.

4. *TRANSPONDER/ENDPOINT*

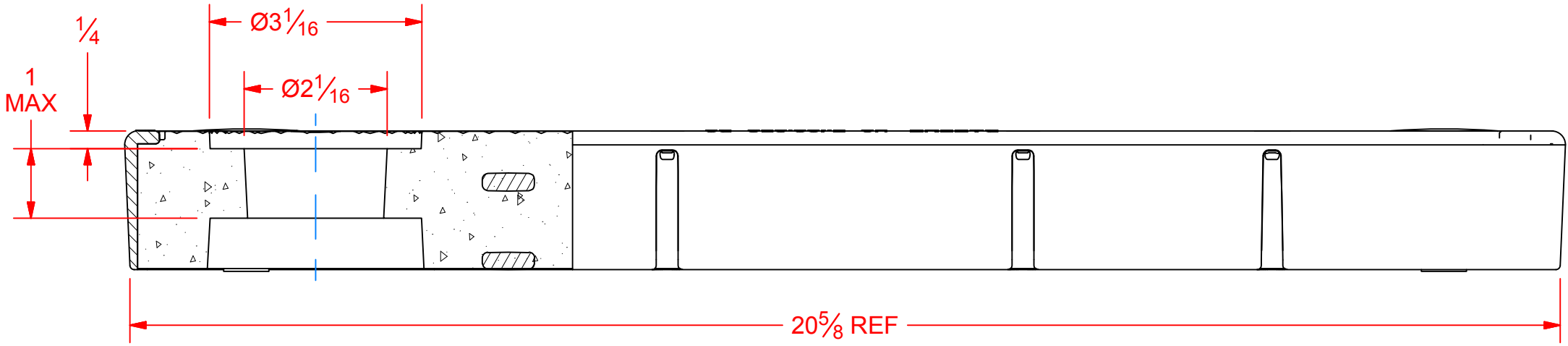
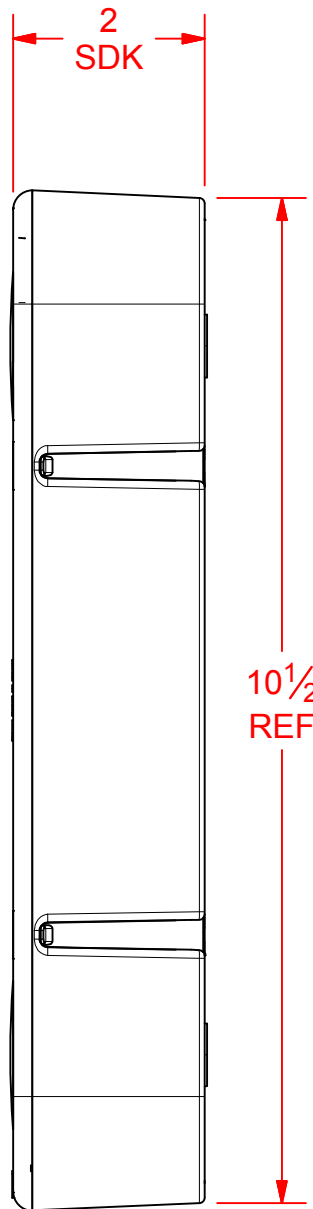
ORION Cellular Endpoint with Nicor Connector

5. & 6. *MOUNTING KITS & LIDS*

- For Meter boxes installed in grass & landscaping or non-traffic areas
 - Through-the-Lid Install Kit (64394-024)
 - Concrete Lid: Oldcastle N16RP R-Series composite lid w/ Polypropylene Ring and 2" hole, marked "water" (see attached)
- For Meter boxes that will need a drive-over lid in traffic areas, i.e. alleys & driveways
 - Below-the-Lid with Knuckles Install Kit (64394-003)
 - Fiberlyte Lid (FL 16D marked "Water")

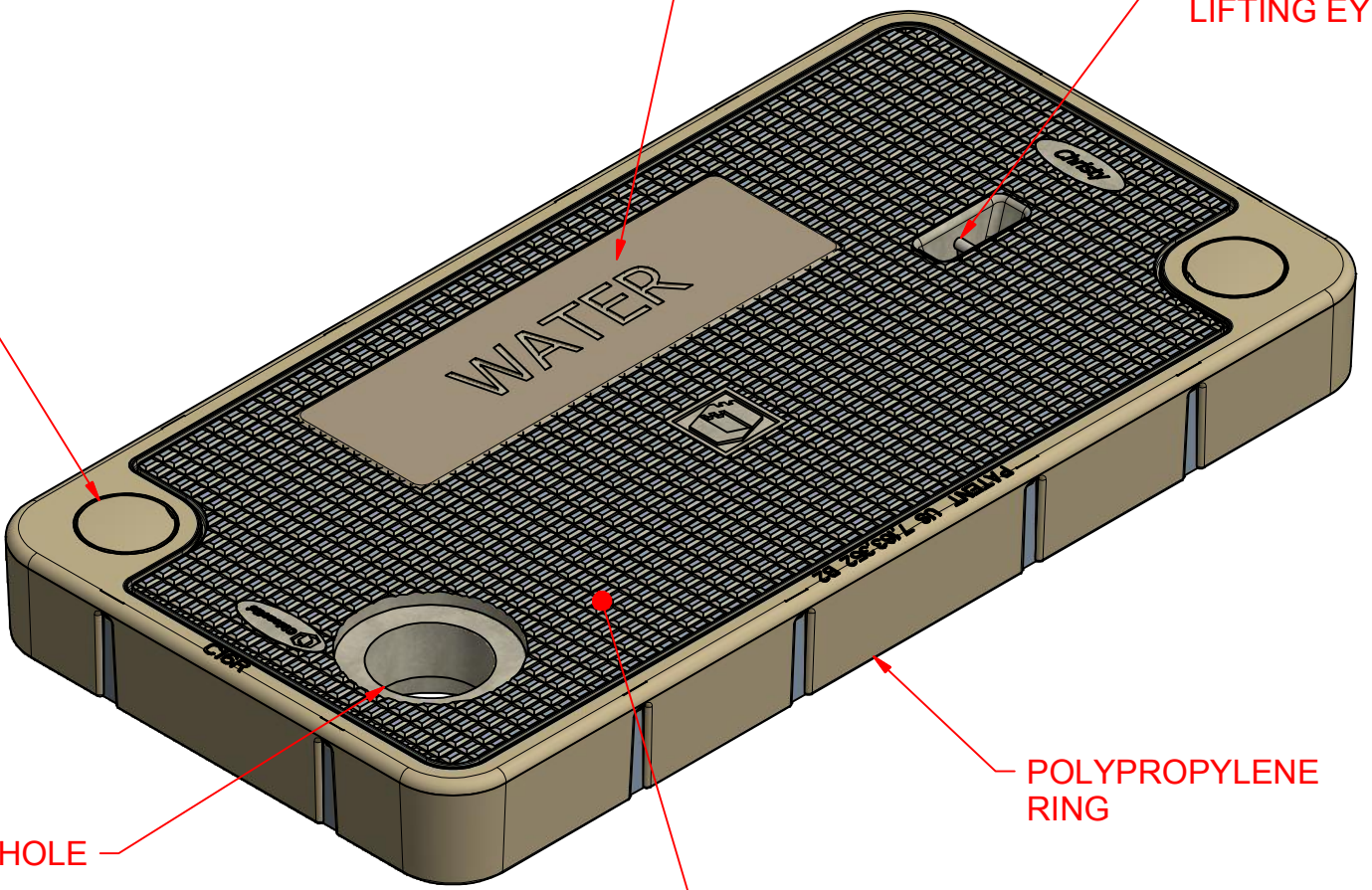


Note to Contractor:
For Grass & Landscaping
Installations ONLY!
Please purchase a Fiberlyte FL 16D
lid for drive-over water meter box
installations.



SECTION A-A

ORION PROBE HOLE



CUSTOMER APPROVAL
THIS SPECIAL ORDER PRODUCT IS APPROVED IN
ACCORDANCE WITH THE SPECIFICATIONS
DESCRIBED ON THIS SHEET.

SIGNATURE _____ DATE _____

CUSTOMER FORMAT DRAWING
EST. WEIGHT: 34 LBS

MATERIAL: POLYMER CONCRETE

THIS DOCUMENT IS THE PROPERTY OF OLDCASTLE ENCLOSURE SOLUTIONS. IT IS CONFIDENTIAL, SUBMITTED FOR REFERENCE PURPOSES ONLY, AND SHALL NOT BE USED IN ANY WAY INJURIOUS TO THE INTERESTS OF, OR WITHOUT THE WRITTEN PERMISSION OF OLDCASTLE ENCLOSURE SOLUTIONS.
COPYRIGHT © 2013 Oldcastle Enclosure Solutions
All Rights Reserved



Oldcastle® Enclosure Solutions
801 S PINE ST
MADERA, CA 93637
1-800-486-7070

DRAWN	9/17/2015
RNUNES	
CHECKED	
QA	
MFG	
APPROVED	

TITLE			
N16RP, WITH ORION PROBE HOLE			
SIZE	C	DWG NO	S15-216
SCALE			
		SHEET 1 OF 1	

UNLESS OTHERWISE SPECIFIED
ALL DIMENSIONS ARE IN INCHES
TOLERANCE:
.XXX = ±.005
.XX = ±.010
.X = ±.030
FRACTION = ±1/16
ANGLE = ±1°

NOT RELEASED